



**CENTREPIECE 10<sup>TH</sup> ANNIVERSARY**  
**Exhibition and sale of contemporary jewellery and objets d'art by**  
**designer makers**

Symphony Hall, Birmingham, 15 November – end December  
&  
Town Hall, Birmingham, 20 November – end December

A thirty two strong eclectic group of jewellery designer makers and silversmiths who together make up 'Centrepiece' will be celebrating their 10<sup>th</sup> Anniversary between November 15<sup>th</sup> and the end of December. The event will be marked in the form of sister exhibitions located in two of Birmingham's most prestigious locations, the Symphony Hall and the recently refurbished Town Hall. Inspirational pieces ranging from ecclesiastically inspired perfume burners to contemporary kitchenware offer something to excite all interior enthusiasts.

The centrepiece members are a diverse group and this is clearly defined in the range of work they produce. Along with classic jewellery pieces and items for men, these showcases will offer the unique opportunity to buy a range of what could be described as 'jewellery for the home' directly from the designers.

The festive timing of this celebration provides the most fantastic opportunity for gift shopping and, in keeping with the goodwill zeitgeist; shoppers are supporting independent British designers.

Items from the various collections can be suited to all members of the family from children to mature relatives, men and women alike. Elegant hand carved gemstone perfume bottles that have been commissioned for presentation to the likes of Evelyn Lauder of Ester Lauder and Vivienne Westwood would make an enchanting addition to any dressing table, whilst curvaceous contemporary vases offer a chic addition to all homes. Kitchenware stirred by the exploration of clean geometric shapes and patterns could be the answer for that person who has everything, particularly with additional option of bespoke or personalised designs.

A little known fact outside the city itself, is that Birmingham is a hothouse of some of the most innovative jewellery design in the UK and boasts a concentration of one hundred specialist retailers and around fifty contemporary designer makers all located within the historic Jewellery Quarter which has its origins in the British Civil War.

All of Centrepiece's members have workshops in the city with the majority based in the one mile radius around the quarter's famous clock.

For more information on Centrepiece and Individual members go to [www.centrepiece-jewellery.co.uk](http://www.centrepiece-jewellery.co.uk)

- ends -

### **Notes to Editors**

- A recent report on the UK jewellery industry estimates its value at £2.755 billion - it has experienced growth of 28% in real terms since 1998.
- Birmingham Jewellery Quarter is a unique environment in England and has few, if any parallels in Europe. It is a major commercial centre for the jewellery trade and other interrelated metal working industries with the largest Assay Office in the country and a concentration of silversmiths, designers, polishers, casters, stone-setters, and tool-makers not forgetting the famous School of Jewellery (part of UCE Birmingham).



Glenn Campbell



Collette Waudby



Abigail Fleissig



Kate Smith



Katherine Campbell-Legg



Jenni Wilson



Michele White



Miranda Sharpe



Penny Gildea



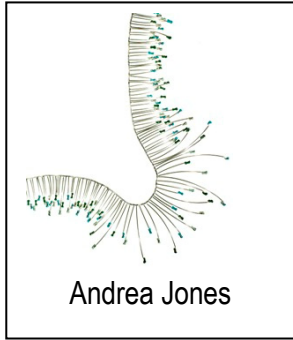
Emma Atherton



Rita Patel



Jessica Hewitt



Andrea Jones



Kathleen Baird



Alice Gow



Kerry O'Connor



Shona Marsh



Cathy Miles



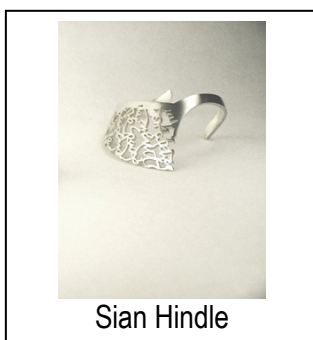
Jeremy Weston



Memory Stather



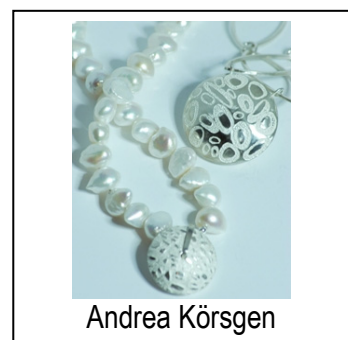
April Neate



Sian Hindle



Sian Elizabeth Hughes



Andrea Körsen



John Moore



Lucy Holland



Johanna Wren



Sara Preisler



Anne Bracey



Nick Hubbard



Anna De Ville



Jamie Hamper